

# 150 NEW BEST OF THE BEST HOUSE IDEAS



## CONTENTS

<b>6</b>	<b>Introduction</b>	<b>246</b>	Brighton Residence II
<b>8</b>	Red Rocks	<b>258</b>	Russian Hill
<b>20</b>	Casa DAB	<b>268</b>	Trammel Residence
<b>30</b>	Casa Namorada	<b>276</b>	Casa Galegos
<b>42</b>	Di Lido	<b>288</b>	Skyhaus
<b>56</b>	Late-vintage Eichler Remodel	<b>300</b>	Menlo Park Residence
<b>70</b>	Creek House	<b>312</b>	House in Mishref
<b>84</b>	Maroon Creek	<b>326</b>	Dogtrot
<b>94</b>	Castro Victorian	<b>338</b>	Meadow Estate
<b>106</b>	Italianate House	<b>350</b>	Thompson House
<b>120</b>	Stradella	<b>364</b>	View Ridge
<b>132</b>	Casa FLD	<b>376</b>	Sonoma Retreat
<b>142</b>	Cheng-Brier House	<b>388</b>	Butterfly Residence
<b>154</b>	Sunset House	<b>400</b>	Double Bay
<b>166</b>	House of Earth and Sky	<b>412</b>	House in the Hudson Valley
<b>178</b>	Casa de Lata	<b>428</b>	River Channel Residence
<b>188</b>	Pacific Heights Modern	<b>442</b>	Butterfly House
<b>200</b>	Layers	<b>454</b>	River's Reach
<b>214</b>	Carla Ridge	<b>468</b>	Uluwatu
<b>226</b>	G'Day House		
<b>238</b>	Courtyard House	<b>478</b>	<b>Directory</b>

## INTRODUCTION

Throughout history, the construction of houses has been a faithful mirroring of the people's lifestyle living in them, of their uses and traditions, and therefore it has been in constant change.

In recent years there has been a revolution in the world of interior design and housing architecture. Designers and architects are striving to create welcoming homes that reflect the personality of their residents, retreats of well-being. We want places where we can feel good, where we can have a part of ourselves in the space around us, environments that reveal our feelings or our way of understanding life. We continue to create spaces where simplicity prevails, but in this search for character, designers play with contrasts of styles, textures, materials, colors, and also the contrast between the old and the new.

Changes in both our way of life and in family structures give rise to open-plan dwellings where living spaces flow into each other, changing their configuration easily through the use of sliding doors or panels, integrating the different atmospheres of the house. In most cases, the kitchen, dining room, and living room merge into a whole that helps to ensure greater communication and interaction between those who live in the house.

The search for bright spaces is the main requirement when building or remodeling a house. That is why dwellings usually have skylights, interior patios or large windows, which can sometimes replace the walls, turning these homes into large everyday windows. However, as many of them are located in the middle of nature, there are no problems of lack of privacy; on the contrary, they allow you to enjoy the beauty of the surrounding landscapes without the need to leave home.

Respect for the environment is also a priority in housing construction; its designs are increasingly adapted to their surroundings and are governed by sustainability criteria. The use of recyclable materials or materials obtained from local raw sources, as well as the consolidation of technologies that use renewable energies (such as photovoltaic solar panels or others that reduce water consumption or make use of rainwater for different uses) are some of the measures that are usually adopted to comply with these criteria.

Nowadays we value the conservation of our environment and the heritage that can perfectly coexist with the present if it is done in an adequate way. We rehab houses with the desire to improve living conditions and comfort, to adapt them to our new way of life, without losing their essence. Sometimes the aim is to increase the useful surface area by taking advantage of the space of a patio or a garden, or adding a new floor on top or an extension. This requires an important work of creativity by the architect to harmoniously fuse the old and the new.

All of this is reflected in the pages of this book where projects of single-family homes of different typologies are shown—new or rehabilitated, houses in the city, in the countryside, in the mountains, surrounded by a lush forest or facing the sea—offering intelligent and ingenious construction and design solutions with a careful aesthetic and with the aim of respecting the environment adapting to the surroundings in which they have been built.



The homeowners saw the property's unique potential and enlisted Jamie L. Brewster McLeod to transform it into a gallery for their extensive art collection.

The renovation focused on keeping the simple, elegant feeling of the original structure while using modern elements to bring in more light and enhance the mountain views. The biggest impact on the space was achieved by raising the roof in the living room, which doubled the room's height, gave it a butterfly roof, and added larger windows. Additional design elements throughout the renovation were driven by the homeowner's art collection and the desire to maintain the character of the original structure.

### **Maroon Creek**

5,500 sq ft

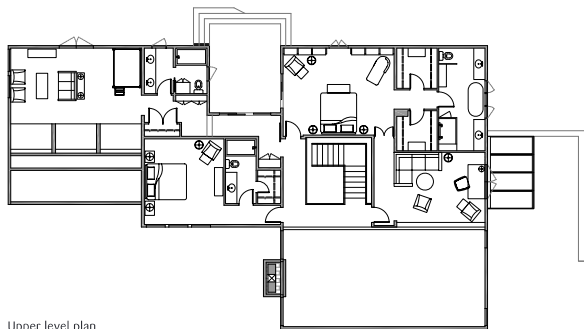
### **Brewster McLeod Architects**

Aspen, Colorado, United States

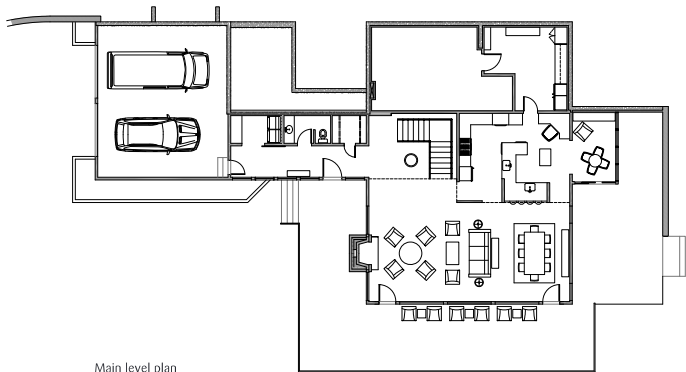
© David Patterson



The original fireplace, a focal point of the house, was refinished in board form concrete to enhance the modern feeling.



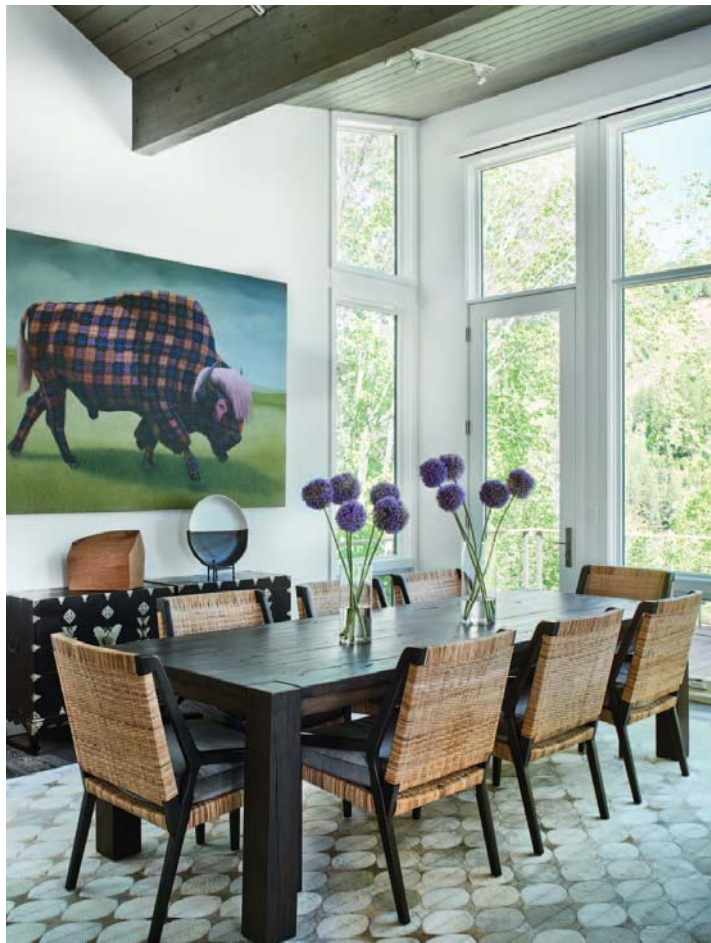
Upper level plan



Main level plan



The coexistence between the rustic and the modern is reflected in the design of the furniture and the material used.



The stairway was designed around a striking collection of black-and-white photographs, while the master bedroom was redesigned around an original art piece that was purchased with the property.





In this children's bedroom, with capacity for eight, the wallpaper with tree trunk design, the bunk beds, and the wooden walls create the illusion of sleeping in a forest cabin.

